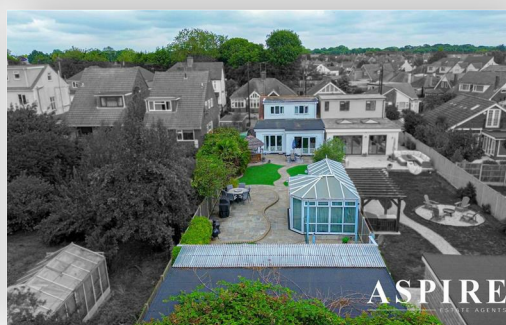


To arrange a viewing contact us
today on 01268 777400



The Avenue, Hadleigh, Benfleet, Essex, Guide price £500,000

Aspire Estate Agents are delighted to introduce this superbly versatile and beautifully presented four-bedroom family home with the added benefit of a self-contained annex, ideal for multi-generational living or those seeking independent guest accommodation. Situated in a highly sought-after part of Hadleigh, this property offers the perfect blend of space, style, and convenience, just moments from local amenities and excellent schools.

From the moment you step inside, you're greeted by a welcoming entrance hall that flows through to a bright and spacious open-plan kitchen/dining area—the true heart of the home. Designed with entertaining in mind, this sociable space features stylish finishes and ample room for gatherings with family and friends. A separate lounge provides a cosy retreat, bathed in natural light from large windows, while a ground floor shower room and useful storage area add to the home's practical appeal. Also on the ground floor is a generous bedroom with a bay window, making it ideal as a main bedroom, guest suite, or second reception room.

The first floor offers three further bedrooms, each with a comfortable and light-filled ambience. The principal bedroom is especially spacious, while the two additional rooms are perfect for children, guests, or home working. A fourth, smaller room offers even more flexibility—whether for storage or study—complemented by a separate W/C and an office nook on the landing, perfect for remote working professionals.

One of the standout features of this property is the stunning, south-facing rear garden, which has been thoughtfully landscaped across multiple tiers to create a low-maintenance yet impressive outdoor space. With a combination of slab-paved seating areas, artificial lawn, and decorative lighting, it's the perfect environment for relaxing or entertaining. The front garden is fully paved and provides off-street parking, with convenient side access to the rear.

www.aspireestateagents.co.uk

Ground Floor

Hallway

Bedroom 1: 6.88m x 3.18m (22'7" x 10'5")

Dining Room: 4.67m x 3.78m (15'4" x 12'5")

Kitchen/Breakfast Room: 5.18m x 3.40m (17'0" x 11'2")

Lounge: 4.75m x 2.95m (15'7" x 9'8")

Shower Room

First Floor

Bedroom 2: 2.95m x 2.67m (9'8" x 8'9")

Bedroom 3: 2.95m x 2.44m (9'8" x 8'0")

Bedroom 4: 3.28m x 2.34m (10'9" x 7'8")

Office: 2.62m x 1.47m (8'7" x 4'10")

Landing

W.C.

Outhouse / Annexe

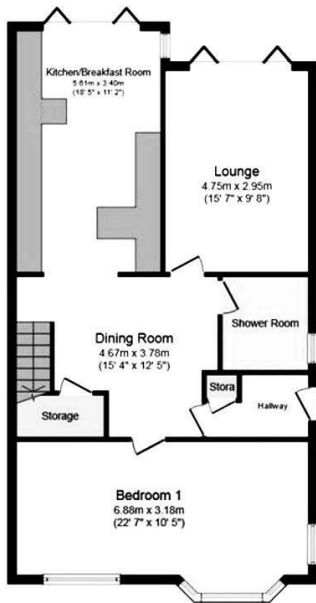
Living Area: 7.54m x 3.20m (24'9" x 10'6")

Kitchenette

Shower Room

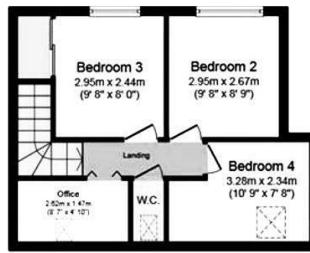
Detached Conservatory - 24'3 x 11'11

Rear Garden 100ft approx



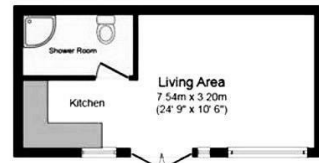
Ground Floor

Floor area 85.9 sq. m. (925 sq. ft.) approx



First Floor

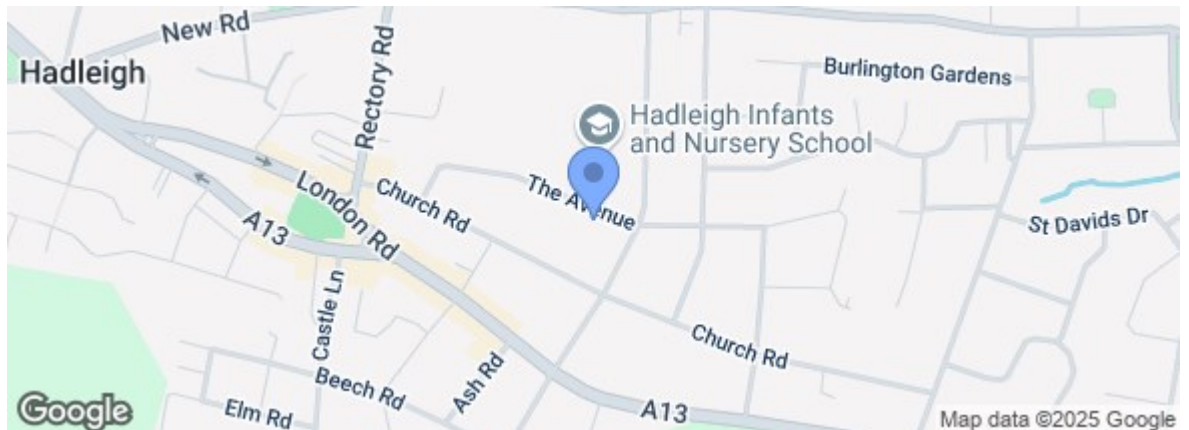
Floor area 34.6 sq. m. (372 sq. ft.) approx



Outouse

Floor area 21.7 sq. m. (234 sq. ft.) approx

Energy Efficiency Rating		Current	Potential
Very energy efficient - lower running costs			
(92 plus)	A		
(81-91)	B		
(69-80)	C		
(55-68)	D		
(39-54)	E		
(21-38)	F		
(1-20)	G		
Not energy efficient - higher running costs			
England & Wales		EU Directive 2002/91/EC	
Environmental Impact (CO ₂) Rating			
Very environmentally friendly - lower CO ₂ emissions			
(92 plus)	A		
(81-91)	B		
(69-80)	C		
(55-68)	D		
(39-54)	E		
(21-38)	F		
(1-20)	G		
Not environmentally friendly - higher CO ₂ emissions			
England & Wales		EU Directive 2002/91/EC	



Under the Property Misdescriptions Act 1991 we make every effort to ensure our sales details are accurate but they are a general outline and do not constitute any part of an offer or contract. Any services, equipment and fittings have not been tested and no warranty can be given as to their condition. We strongly recommend that all the information provided be verified by your advisors and in particular, measurements required for a specific purpose such as fitted furniture or carpets. Please tell us if you have any problems and members of our branches will help either over the phone or in person. A copy of our complaints procedure is available on request. The details are issued on the strict understanding that any negotiations in respect of the property named herein are conducted through Aspire Estate Agents.